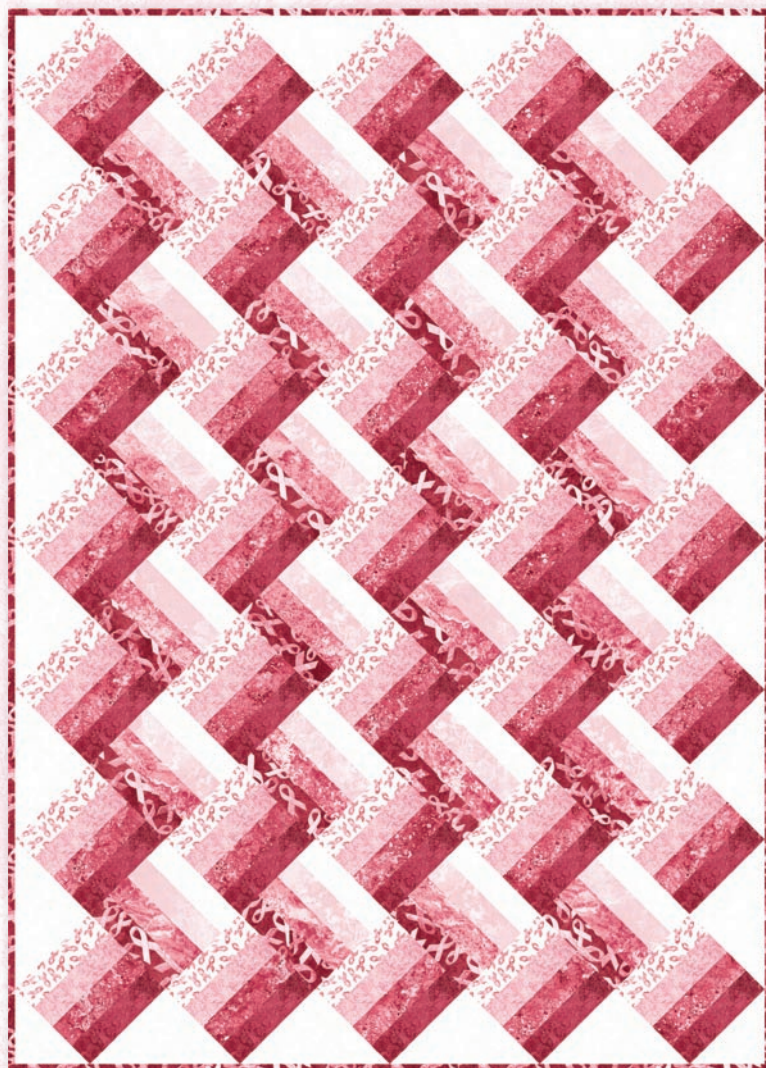
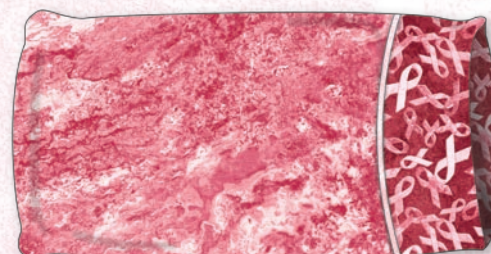


STONEHENGE Pink ribbon

Collection by Linda Ludovico
Patterns by Patti Carey



Apron
Size: 28" x 33"
www.northcott.com



Pillow Case
Size: 20" x 36"
www.northcott.com

"Intertwined"
Size: 43" x 60"
by Patti Carey
www.northcott.com

Stonehenge Pink Ribbon Projects

Do you know someone who is battling breast cancer or wants to support someone who is? Show *your* support and make them a colorful 20-minute pillowcase, an easy-peasy apron or a comforting lap quilt (or all 3!) using Northcott's Stonehenge Pink Ribbon, a Quest for a Cure™ collection supporting breast cancer research.

20-minute Pillowcase – 20" x 36"

Supplies: 1yd of **3951-23** pink marble texture – trim to 30" long x 41" wide
¾yd of **39108-25** large pink ribbon – trim to 12½" long x 41" wide
⅛yd of **3937-21** pale pink texture – cut a piece 1½" x 41" wide

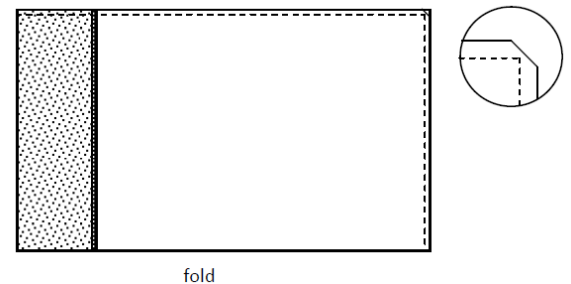
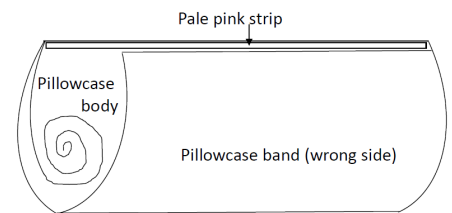
Instructions: 1) Press the 1½" piece in half wrong sides together so that it is ¾" x 41". With raw edges aligned, pin it to a 41" edge of the pink marble piece; sew together, using long stitches and a ¼" seam.

2) Lay this on a 41" edge of the pink ribbon piece, aligning raw edges. Pin in place. Roll up marble fabric and fold bottom of pink ribbon fabric up over marble fabric, encasing the marble fabric and aligning the raw edge with the pinned edge. Re-pin through all layers and sew ¼" from raw edge.

3) Reach into tube and pull out the marble fabric to turn the pillowcase band right side out; press seam toward pink ribbon fabric.

4) Fold pillowcase in half, wrong sides together, aligning raw edges and matching band seam. Sew a scant ¼" from raw edges on side and end of pillowcase; trim corner as shown.

5) Turn inside out and finger-press seam to one side. Lay pillowcase flat and press side and end seams so that the seam is at the edge. Sew a generous ¼" seam on side and end, encasing the raw edges in the seam. Turn right side out and press seam to one side. You're finished!



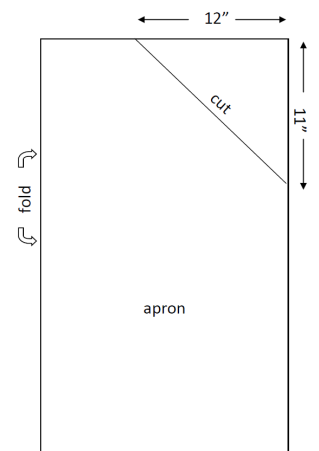
Easy-Peasy Apron – 28" high x 33" wide

Supplies: ¾yd of **39108-25** large pink ribbon – trim to 33" wide x 30" high for apron body
⅓yd of **3934-23** light pink texture – cut 3 strips 3" x width of fabric for tie
¼yd of **3954-25** dark pink texture - trim to 33" wide for pocket

Instructions: 1) Fold apron fabric in half (16½" wide). Measure 12" across top edge from corner and mark with a pin. Measure 11" down from corner and mark with a pin. Fold diagonally from pin to pin and finger-press; cut along fold.

2) Press under ¼" on one long edge of pocket fabric, then press under 1"; stitch close to fold.

3) Lay pocket face down on wrong side of bottom of apron, aligning raw edges. Sew together with a ½" seam; finish raw edge with a zigzag stitch. Press seam to one side, fold pocket to front and press so that the seam is at the bottom edge. Align raw edges at sides and baste pocket to apron with a ¼" seam. Press sides under ½", then ½" and stitch close to fold.



- 4) Make pockets by stitching 2-3 evenly-spaced vertical lines through all layers, back-stitching at top and bottom edges of pocket strip.
- 5) Press top edge of apron under $\frac{1}{4}$ ", then 1" and stitch close to fold.
- 6) Press angled edges under $\frac{1}{4}$ ", then 1" and stitch close to fold to make casing for tie.
- 7) To make apron tie, sew the 3 light pink strips end-to-end; press seams open. Press in half lengthwise, wrong sides together. Bring raw edges to fold, wrong sides together, and press again to make a tie $\frac{3}{4}$ " wide. Turn ends under and stitch $\frac{1}{8}$ " from all edges.
- 8) Insert tie in casing, pulling through so that opening at neck is large enough to slip over your head and the ends are the same length.

Intertwined

Size: 43" x 60"

Number of Blocks & Finished Size: 35 "A" rail fence blocks & 24 "B" rail fence blocks

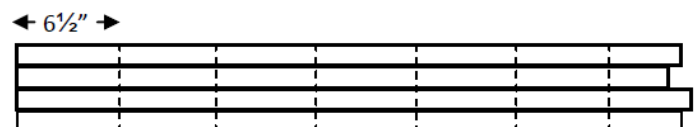
Skill level: Confident beginner

Fabric Requirements	Yards	Cutting Instructions
39108-25 large pink ribbon	$\frac{5}{8}$ yd	Cut 10 strips 2" x width of fabric (wof), set aside 4 strips for B blocks. Join remaining 6 strips end-to-end and press in half for binding.
3951-23 pink marble	$\frac{1}{2}$ yd	Cut 4 strips 2" x wof for B blocks.
3937-21 palest pink	$\frac{1}{2}$ yd	Cut 4 strips 2" x wof for B blocks.
3956-10 white texture	$\frac{7}{8}$ yd	Cut 4 strips 2" x wof for B blocks. Cut 2 strips $9\frac{3}{4}$ " x wof; cut into (5) $9\frac{3}{4}$ " squares, and cut twice diagonally. From balance, cut (2) $5\frac{1}{8}$ " squares; cut once diagonally.
3934-25 darkest pink	$\frac{3}{8}$ yd	Cut 6 strips 2" x wof for A blocks.
3954-25 medium-dark pink	$\frac{3}{8}$ yd	Cut 6 strips 2" x wof for A blocks.
3934-23 light pink	$\frac{3}{8}$ yd	Cut 6 strips 2" x wof for A blocks.
39109-25 small pink ribbon	$\frac{3}{8}$ yd	Cut 6 strips 2" x wof for A blocks.
Backing: 39109-25	$2\frac{3}{8}$ yd	Cut 1 piece 68" long. Cut balance lengthwise into 4 equal pieces, join end-to-end and add to side of 68" piece.
Batting	A piece 48" x 65"	

Piecing:

B blocks (24):

- 1) Keeping strips aligned at one end, sew a pink marble strip to each pink ribbon strip, pressing seam toward pink ribbon.
- 2) Keeping same end aligned, add a palest pink strip to each pink marble strip, pressing seam toward marble.
- 3) Keeping same end aligned, add a white texture strip to each palest pink strip, pressing seam toward palest pink. Make 4 sets of strips.
- 4) Cross-cut each strip set into (6) $6\frac{1}{2}$ " squares.



A blocks (35):

- 1) Keeping strips aligned at one end, sew a medium-dark pink strip to each darkest pink strip, pressing seam toward darkest pink.
- 2) Keeping same end aligned, add a light pink strip to each medium-dark pink strip, pressing seam toward medium-dark strip.
- 3) Keeping same end aligned, add a small pink ribbon strip to each light pink strip, pressing seam toward light pink.
- 4) Cross-cut each strip set into (6) $6\frac{1}{2}$ " squares.

Assembling the Quilt:

- 1)** Using the photo as a guide, arrange the A blocks diagonally in 7 rows of 5, having the darkest strip toward the bottom right.
- 2)** Insert the B blocks between the A blocks, having the darkest strip toward the bottom left.
- 3)** Add the 9 $\frac{3}{4}$ " white triangles along outer edges, and the 5 $\frac{1}{8}$ " triangles at each corner.
- 4)** Sew into diagonal rows, then sew the rows together, matching seams at block corners and pressing seams toward dark strips where possible.

Finishing:

- 1)** Layer the pieced backing, batting and quilt top.
- 2)** Baste and quilt as desired. An allover pattern or pantograph and a variegated pink thread is a good choice for this quilt.
- 3)** Trim edges even with quilt top. Sew prepared binding to the edges, turn and stitch in place.