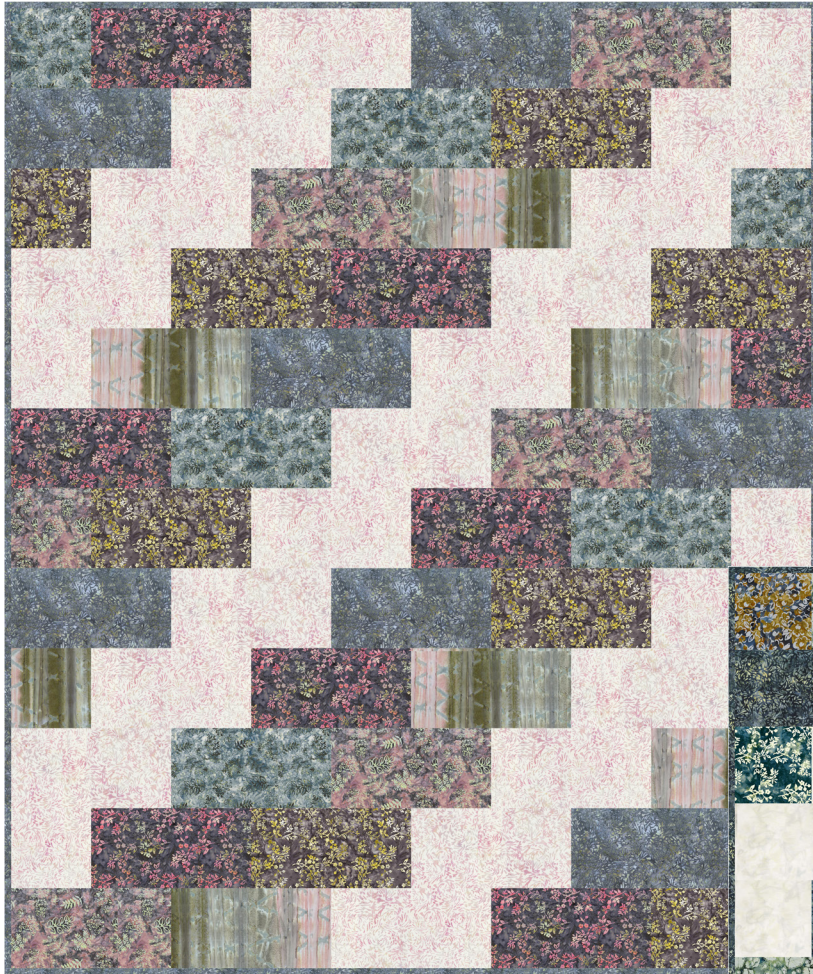


Another Brick in the Wall Community Garden

FREE DOWNLOAD PATTERN

60" x 72"



Designed by Banyan Batiks Studio
www.BanyanBatiks.com

Another Brick in the Wall

2 Color Options – Dusty Rose, Gold & Teal

Finished Size: 60" x 72"

Collection: Community Garden

WOF = width of fabric

All seams are sewn using a ¼" seam allowance

REQUIREMENTS:

	Dusty Rose	Gold & Teal	Yardage	Cutting Instructions
Fabric A	80714-92	80711-53	1/2 yd	Cut 2 – 6 ½" x WOF strips <ul style="list-style-type: none"> Sub-cut 4 – 6 ½" x 12 ½" rectangles & 3 - 6 ½" x 6 ½" squares
Fabric B	80712-92	80710-74	5/8 yd	Cut 3 – 6 ½" x WOF strips <ul style="list-style-type: none"> Sub-cut 7 – 6 ½" x 12 ½" rectangles & 1 - 6 ½" x 6 ½" square
Fabric C	81230-80	80711-94	5/8 yd	Cut 3 – 6 ½" x WOF strips <ul style="list-style-type: none"> Sub-cut 6 – 6 ½" x 12 ½" rectangles & 1 – 6 ½" x 6 ½" square
Fabric D	80714-27	80713-79	1/2 yd	Cut 2 – 6 ½" x WOF strips <ul style="list-style-type: none"> Sub-cut 5 – 6 ½" x 12 ½" rectangles & 2 - 6 ½" x 6 ½" squares
Fabric E	80712-93	80712-49	5/8 yd	Cut 3 – 6 ½" x WOF strips <ul style="list-style-type: none"> Sub-cut 7 – 6 ½" x 12 ½" rectangles & 1 - 6 ½" x 6 ½" square
Fabric F	81600-92	81600-49	1 1/8 yd	Cut 3 – 6 ½" x WOF strips <ul style="list-style-type: none"> Sub-cut 7 – 6 ½" x 12 ½" rectangles Cut 7 – 2 ¼" x WOF strips for binding
Fabric G	81600-21	81300-11	1 3/8 yds	Cut 7 – 6 ½" x WOF strips <ul style="list-style-type: none"> Sub-cut 18 – 6 ½" x 12 ½" rectangles & 4 - 6 ½" x 6 ½" squares
Backing (Crosswise)	80714-27	80713-79	4 yds	See Step 3 below.

QUILT TOP ASSEMBLY:

- Using the quilt image as a guide for fabric placement, sew rectangles together to complete each row, beginning and ending with a square on rows 1, 3, 5, 7, 9 & 11.
- Sew rows together two at a time, i.e. sew rows 1 & 2, then rows 3 & 4, etc. Then join the row sets together. This will keep the size more manageable to work with.
- Cut the backing fabric in half to give you two 2 yd x WOF pieces. Sew the two pieces together along the selvage edges for a backing piece measuring approximately 72" x 84".
- Layer completed quilt top with batting and backing. Quilt as desired.
- Prepare binding from the 2 ¼" x WOF Fabric C strips, and bind quilt using your favorite method.