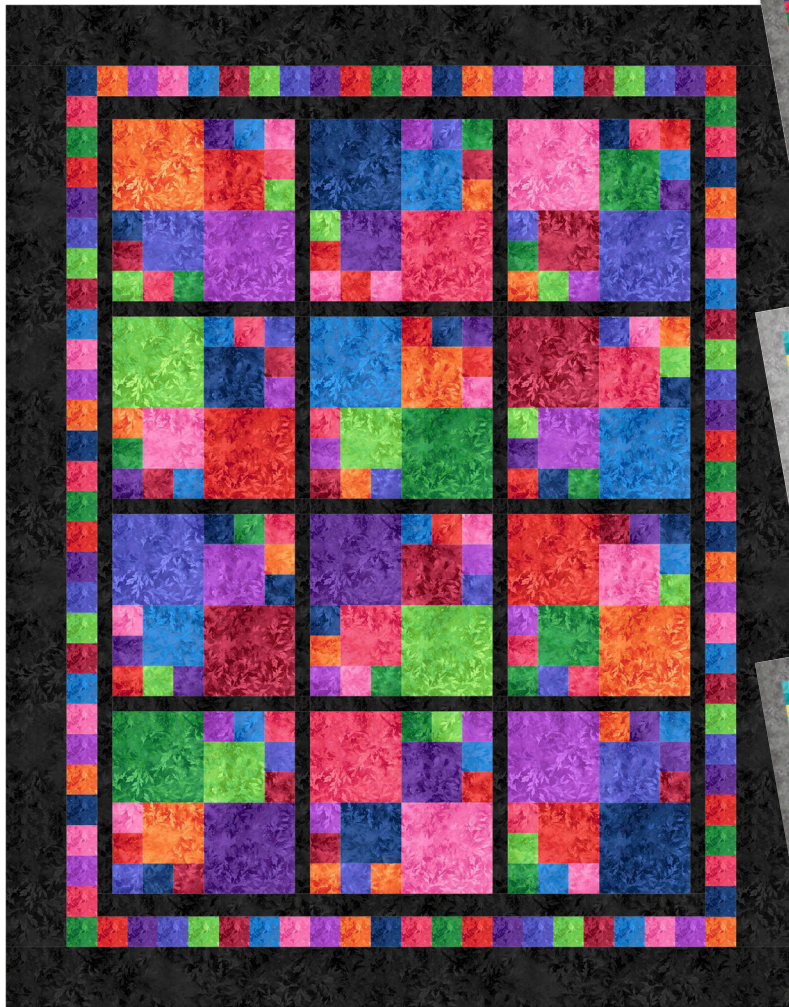




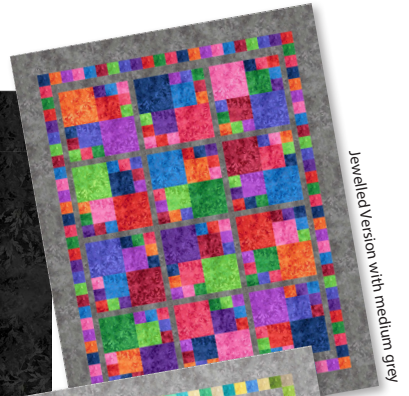
NORTHCOTT  
*Cottons that feel like silk*

# Essence

by Northcott Studio



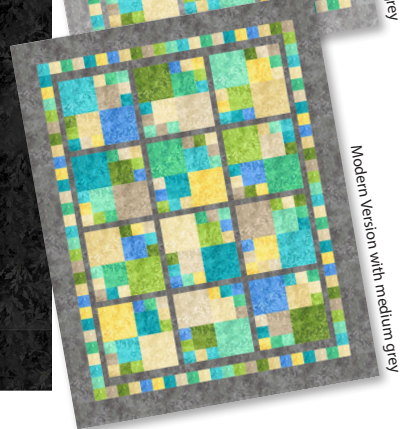
Jewelled Version with black



Jewelled Version with medium grey



Modern Version with light grey



Modern Version with medium grey

FREE PATTERN • **Jewelled Tiles** • 52" x 66" • by Elaine Theriault of Northcott

**Northcott Canada**  
101 Courtland Avenue  
Vaughan, Ontario L4K 3T5

**Northcott USA**  
1099 Wall St. West, Suite 250  
Lyndhurst, NJ 07071

[www.northcott.com](http://www.northcott.com)

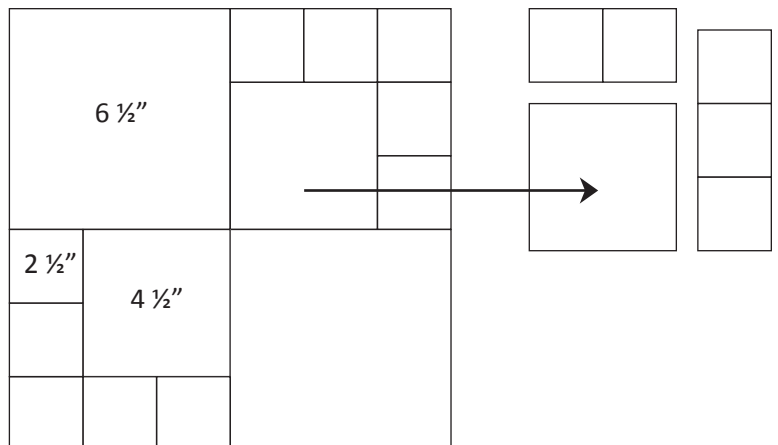
# Jeweled Tiles Quilt

Approximate Size: 52" by 66"  
 WOF = width of fabric

Fabric requirements	Yard	Cutting Instructions
<b>Jeweled Version                      Fabric A -</b> Blocks + pieced border 9025-58, 9025-85, 9025-46, 9025-21, 9025-23, 9025-76, 9025-83, 9025-78, 9025-25, 9025-49, 9025-86, 9025-24	FQ of EACH (12 FQ in total)	<ul style="list-style-type: none"> <li>• From each of the FQs, cut the following:                             <ul style="list-style-type: none"> <li>• Two (2) squares measuring 6 ½" square</li> <li>• Two (2) squares measuring 4 ½" square</li> <li>• Nineteen (19) squares measuring 2 ½" square</li> </ul> </li> </ul>
<b>Fabric B -</b> Sashing, borders and binding 9025-99 (black) OR 9025-96 (medium grey)	2 yards	<ul style="list-style-type: none"> <li>• Cut nine (9) strips measuring 1 ½" by WOF</li> <li>• Reserve three (3) strips for the horizontal sashing</li> <li>• Sub cut eight (8) pieces that measure 12 ½" by 1 ½" for the vertical sashing</li> <li>• Join the remainder of the strips together using a diagonal seam for the inner border (vertical only)</li> <li>• Cut three (3) strips measuring 2" by WOF for the top and bottom inner border</li> <li>• Cut seven (7) strips measuring 4 ½" by WOF                             <ul style="list-style-type: none"> <li>• Join the strips using a diagonal seam for the outer border</li> </ul> </li> <li>• Cut seven (7) strips measuring 2 ½" by WOF                             <ul style="list-style-type: none"> <li>• Join the strips using a diagonal seam for the binding</li> </ul> </li> </ul>
<b>OR</b>		
<b>Modern Version                      Fabric A -</b> Blocks + pieced border 9025-64, 9025-11, 9025-62, 9025-61, 9025-13, 9025-66, 9025-44, 9025-52, 9025-75, 9025-77, 9025-12, 9025-14	FQ of each (12 FQ in total)	<ul style="list-style-type: none"> <li>• See cutting instructions for Fabric A above</li> </ul>
<b>Fabric B -</b> Sashing, borders and binding 9025-96 (medium grey) OR 9025-94 (light grey)	2 yards	<ul style="list-style-type: none"> <li>• See cutting instructions for Fabric B above</li> </ul>
<b>Backing</b>	3 ¼ yards	<ul style="list-style-type: none"> <li>• Pieced crosswise</li> </ul>

### Block Assembly:

Each block requires two (2) 6 ½" squares, two (2) 4 ½" squares and ten (10) 2 ½" squares. Mix and match the colors for each block until you are satisfied. Sew the components together as per the block diagram.



**Quilt Top Assembly:**

Lay out the blocks as you would like them to appear in your quilt. Add one strip of sashing (1 ½" by 12 ½") between the blocks to create four rows of three blocks each.

Measure the length of all four rows to determine the average length. Cut three pieces of the horizontal sashing (1 ½") to the SAME length as this average. Match the center of the sashing to the center of the row of blocks and pin. Match the ends of the sashing to both ends of the block row and pin. You may have to ease the sashing or the block row. Pin. Continue in this manner until all the rows and sashing are joined. Quilt should measure 38 ½" by 51 ½" at this point.

**Inner border:**

Using Fabric B, cut TWO pieces of fabric (1 ½" strips) that equal the vertical length of the quilt (take the measurement through the vertical center of the quilt). Match the center of the inner border to the side center of the quilt and pin. Match the ends of the inner border to both ends of the quilt and pin. You may have to ease the inner border or the quilt. Sew the seams. Press towards the inner border. Repeat this process for the top and bottom inner borders using the width (through the center) of the quilt as your measurement guide and the 2" strips of Fabric B. Quilt should measure 40 ½" by 54 ½" at this point.

**Pleced Border:**

Join 27 squares (2 ½") of Fabric A together twice for the two side pieced borders. Using the same method outlined above, pin the center and the ends to the quilt top. Ease the border or the quilt and sew. Press towards the inner border. Join 22 squares of Fabric A together twice for the top and bottom pieced borders. Press towards the inner border.

**Outer Border:**

Using Fabric B, cut TWO pieces of fabric that equal the vertical length of the quilt (take the measurement through the vertical center of the quilt). Match the center of the outer border to the side center of the quilt and pin. Match the ends of the outer border to both ends of the quilt and pin. You may have to ease the outer border or the quilt. Sew the seams. Press towards the outer border. Repeat this process for the top and bottom outer borders using the width (through the center) of the quilt as your measurement guide. Press towards the outer border.

NOTE: It is best to NOT prewash preprinted fabrics such as panels and border prints. The fabric goes through many processes to be delivered to the consumer and there may be some size variations. If you're unable to cut the panels to the size mentioned above, cut the pieces to a size that works for your panels and adjust any other measurements accordingly.